

We Make Solar Evolve

EiTe POLY

Polycrystalline Module

ET-P672335WW/WB 335W

ET-P672330WW/WB 330W

ET-P672325WW/WB 325W

ET-P672320WW/WB 320W

Rich Product Portfolio & Innovative Product Strategy, satisfy customer needs to the best, and keep the customers' overall costs to the lowest.



High Conversion Efficiency

Industry-leading processing techniques realize great module efficiency to a maximum of 17.26%, steady power output guaranteed.



Anti-reflective Coating and Reduce O&M Costs

Easier to clean by rainwater to remove dirt on the glass surface, making higher power output and lower maintenance costs.



0 to +5W Positive Tolerance

Gain more power yields than expected.



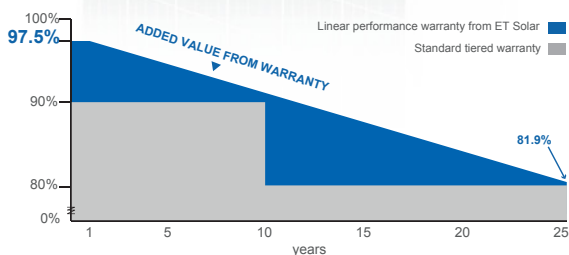
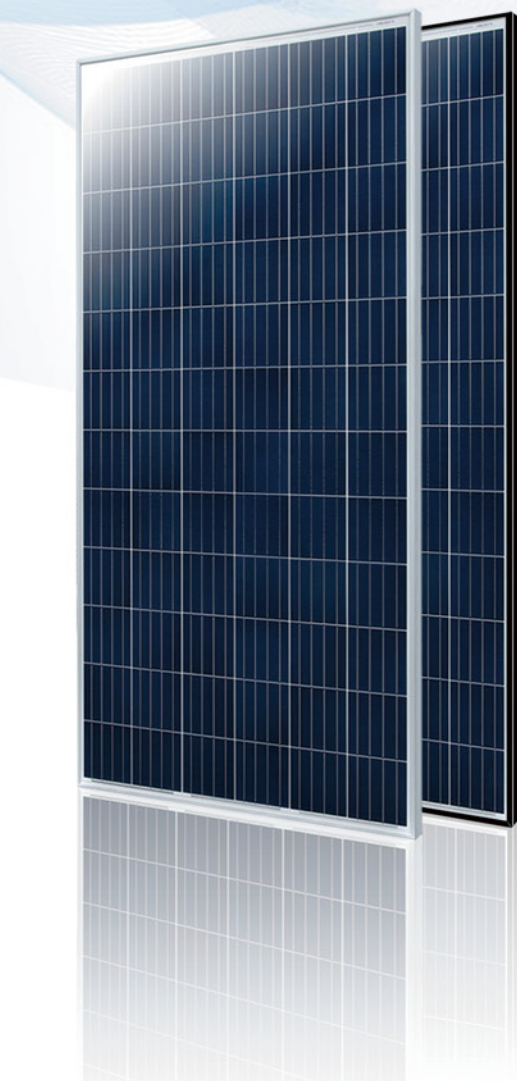
Excellent Loading Capability

2400Pa wind loads, 5400Pa snow loads.
Durable and long-lasting.



Top-quality & Trustworthy Product

Rigorous Quality Management System built.
Multiple internationally recognized PV industry standard certifications attained.



25 25-year performance warranty

10 10-year warranty on materials and workmanship

IEC 61215 Ed.2
IEC 61730
IEC 61701
IEC 62716



www.etsolar.com

M/ET-PD-EN-AP2018V2

ELECTRICAL SPECIFICATIONS (STC)

Model Type	ET-P672335WW	ET-P672330WW	ET-P672325WW	ET-P672320WW
	ET-P672335WB	ET-P672330WB	ET-P672325WB	ET-P672320WB
Peak Power (Pmax)	335W	330W	325W	320W
Module Efficiency	17.26%	17.01%	16.75%	16.49%
Maximum Power Voltage (Vmp)	37.90V	37.58V	37.28V	37.13V
Maximum Power Current (Imp)	8.84A	8.78A	8.72A	8.62A
Open Circuit Voltage (Voc)	46.83V	46.65V	46.31V	45.94V
Short Circuit Current (Isc)	9.47A	9.35A	9.28A	9.24A
Power Tolerance	0 to +5W			
Operating Temperature	- 40 ~ + 85°C			
Maximum System Voltage	DC 1000V			
Nominal Operating Cell Temperature	45±2°C			
Fire Safety	Class C			
Maximum Series Fuse Rating	20A			

ELECTRICAL SPECIFICATIONS (NOCT)

Model Type	ET-P672335WW	ET-P672330WW	ET-P672325WW	ET-P672320WW
	ET-P672335WB	ET-P672330WB	ET-P672325WB	ET-P672320WB
Peak Power (Pmax)	247.2W	243.6W	240W	237.3W
Maximum Power Voltage (Vmp)	34.8V	34.6V	34.4V	34.1V
Maximum Power Current (Imp)	7.1A	7.03A	6.98A	6.97A
Open Circuit Voltage (Voc)	43.3V	43.1V	42.8V	42.5V
Short Circuit Current (Isc)	7.64A	7.54A	7.48A	7.45A

MECHANICAL SPECIFICATIONS

Cell Type	156.75mm x 156.75mm
Number of Cells	72 cells in series
Weight	22.5 kg (49.60 lbs)
Dimension	1956×992×40mm (77.01×39.06×1.58 inch)
Max Load	5400 Pascals (112 lb/ft ²)
Junction Box	≥IP67 rated
Connector	Z4S-abcde/JM601
Origin	China

TEMPERATURE COEFFICIENT

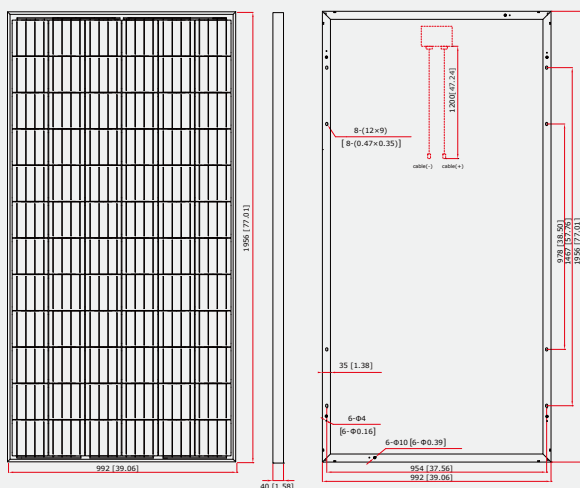
Temp. Coeff. of Isc (TK Isc)	0.04% /°C
Temp. Coeff. of Voc (TK Voc)	-0.34% /°C
Temp. Coeff. of Pmax (TK Pmax)	-0.41% /°C

PACKING MANNER

Container	40' HQ
Pieces per Pallet	26
Pieces per Container	572

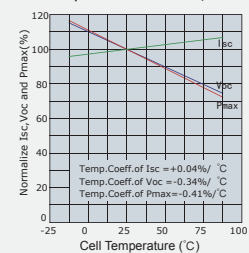
PHYSICAL CHARACTERISTICS

Unit:mm (inch)

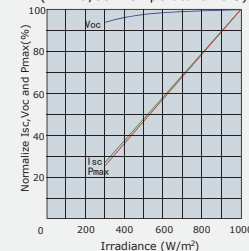


ELECTRICAL CHARACTERISTICS

Temperature Dependence of Isc, Voc and Pmax



Irradiance Dependence of Isc, Voc and Pmax (AM1.5, Cell Temperature 25°C)



Note: the specifications are obtained under the Standard Test Conditions (STCs): 1000 W/m² solar irradiance, 1.5 Air Mass, and cell temperature of 25°C. The NOCT is obtained under the Test Conditions: 800 W/m², 20°C ambient temperature, 1m/s wind speed, AM 1.5 spectrum.

Please contact support@etsolar.com for technical support. The actual transactions will be subject to the contracts. This parameters is for reference only and it is not a part of the contracts. The specifications are subject to change without prior notice.

The connectors listed in the datasheets are for reference only and it is not a part of the contract. The connector we use for the customer's order is not limited to the types listed in the datasheet, which is subject to change without prior notice. The installers need to use the same connector type to PV system.